

Get Ready for Spring the Right (of Way) Way

Look Up, Look Down

Trees are a vital part of any rural or urban setting's quality of life. If you are getting ready to plant trees, bushes or shrubs, look around to see where overhead power lines may hinder future growth.

Call Klickitat PUD for assistance on tree selection and placement. Remember, a 2-foot-tall fir seedling can grow to more than 100-feet tall and 30- to 50-feet wide.

After you look up, look down for underground service. Never assume underground utility lines are buried deeper than you plan to dig. In some cases, utility lines are very close to the surface.

Landscaping and planting to hide underground utilities makes the equipment hard to find. This makes outages last longer and is unsafe for workers.

Underground utility locating is free. There is no reason not to call. 811 is the national number to call for line-locating requests. Washington state law allows utilities 48 hours to respond to your request, so planning ahead is best.

Right-of-Way Maintenance is Year-Round

Trees growing near power lines can be a safety hazard and a major cause of power outages.

According to the Revised Code of Washington, any time a potential threat exists that could cause damage to electric facilities from trees and vegetation, an electric utility is required to remove the hazard. With growth rates of 8 to 10 feet a year on some species, it is a full-time job just staying ahead of annual growth.

If there are trees in the KPUD right of way, call to discuss your options. Limbs and trees within 10 feet of distribution electrical lines and 23 feet of transmission lines are cut back. This helps ensure reliable electric service, and is done at no cost to you. See the graphic on page 29 for planting specifications.

Right-of-way easements grant Klickitat PUD the authority to trim trees without property-owner permission to provide for a safe and reliable electric system. However, KPUD respects the property of its customer-owners and, in most cases, notifies the property owner of the need for tree work before trimming is done. In unusual or emergency situations, it may be necessary to trim trees without first notifying the property owner to restore service or eliminate safety hazards.

The extent of trimming required is determined by the tree's growth rate, the movement of trees and conductors in bad weather, and the voltage of the lines. KPUD employs a professional tree-trimming crew that includes a certified arborist, Foreman Dale Stelter. Dale also helps determine if the tree is diseased, dead or dying and, depending on the proximity of the tree to electric facilities, if removal of the tree is required.

Could You Get There?

What do an accessible right of way and your lights being on faster in an outage have in common? They are related because most tree-related outage times can be greatly reduced if the right of way is clear of trees and brush. Brush and trees inhibit visual inspections, and vehicle and foot traffic.

When is the last time you walked the right of way on your property? Are all of the poles easily accessible?

KPUD can field check your situation, let you know when our maintenance crews will be in your area, and make suggestions for clearing and maintaining your right of way.

Safe Logging Saves Lives!

If Klickitat PUD power lines are near your harvest area, please call for consultation. Options are available to help you work safely and keep the lights on.

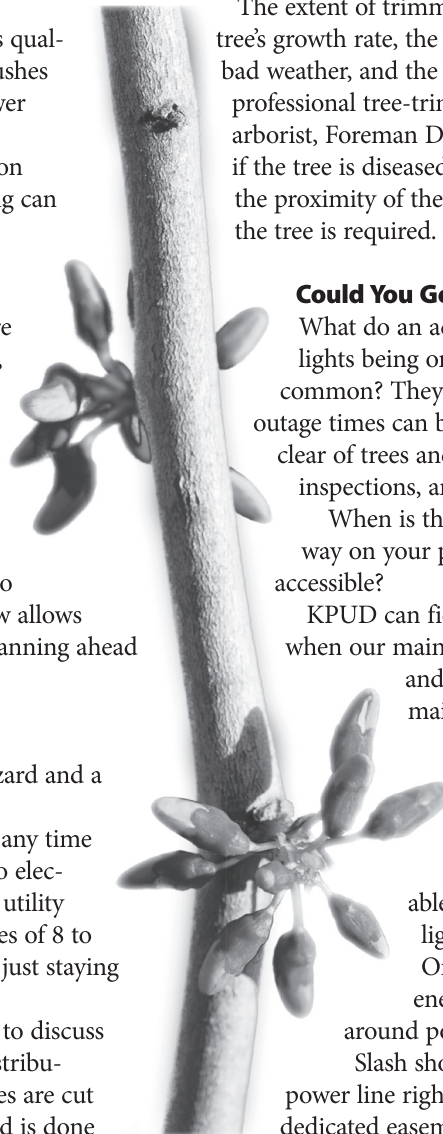
Only people qualified to work near energized conductors should work around power lines.

Slash should not be piled and burned on power line rights of way. When replanting, observe dedicated easements and rights of way on the property.

Don't plant in these areas. Tall-growing trees will be cut down in the next maintenance cycle. ■

On the Schedule

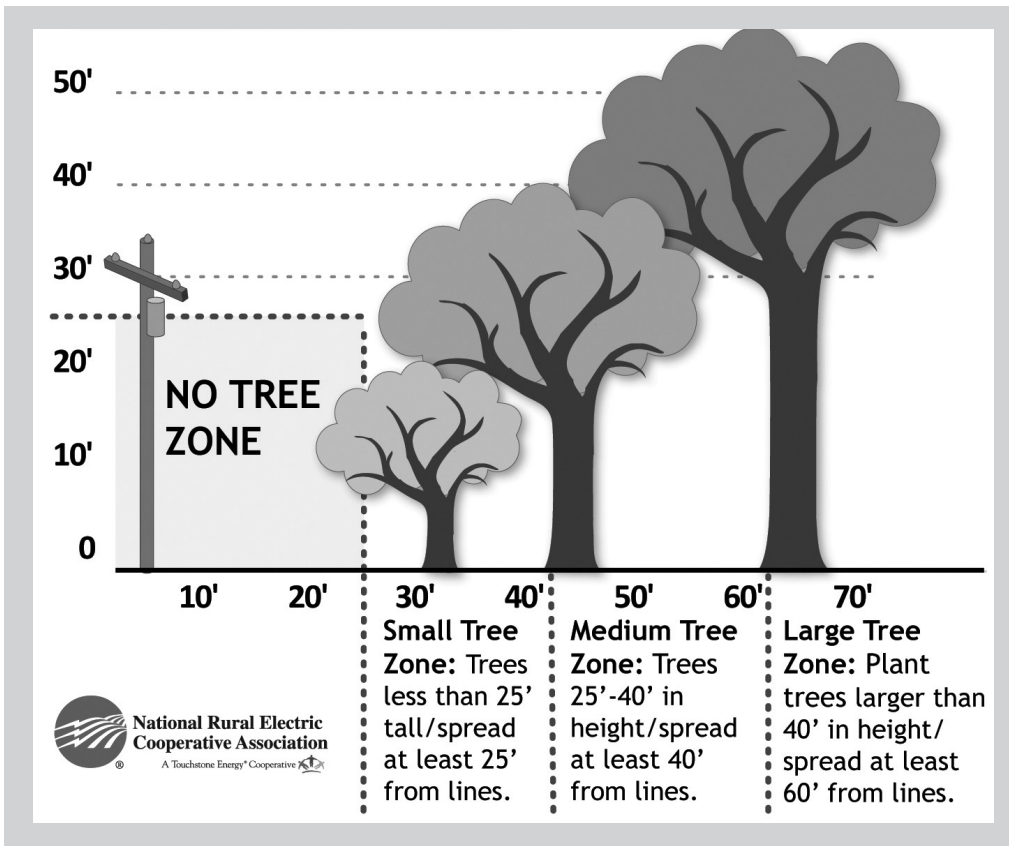
Trimming in 2015 is focused on the west side of the county, including the Snowden, Appleton and Trout Lake areas, as well as the Highway 141 corridor.



COMMUNITY CALENDAR

March

- 3**—Free lecture, "This Aging Body," 7 p.m., Waters Edge, 551 Lone Pine Blvd., The Dalles. Call (541) 296-8444 to register.
- 6-8**—America's Largest Antique and Collectible Show, Expo Center, Portland
- 7**—Challenge of Champions Extreme Rough Stock Showdown at TRAC Center, Pasco
- 8**—Daylight saving time begins
- 10**—Free lecture, "Could you Repeat That? Hearing Loss & Prevention," 7 p.m., Waters Edge, 551 Lone Pine Blvd., The Dalles. Call (541) 296-8444 to register.
- 10**—Klickitat PUD Board of Commissioners' meeting, 2 p.m., Goldendale
- 10, 17 and 24**—Free sustainable gardening workshops, Goldendale Community Library, 2 to 3:30 p.m. Registration not required.
- 13-14**—Annual Used Book and Multimedia Sale, White Salmon Valley Community Library, 10 a.m.
- 11-15**—Portland Metro RV Dealers' Spring RV Show of Shows, Expo Center, Portland
- 14**—Three Rivers Craft Brew and Bacon Festival, Three Rivers Convention Center, Kennewick
- 15**—Klickitat PTO, 9th Annual Pirate Carnival & Silent Auction, Klickitat School gym, 2 to 5 p.m. Contact (509) 365-2173 or klickitatpto.k12@gmail.com.
- 17**—St. Patrick's Day
- 20**—Spring begins
- 20-22**—59th Annual Portland Roadster Show, Expo Center, Portland
- 21-22**—Rose City Gun and Knife Show, Expo Center, Portland
- 24**—Klickitat PUD Board of Commissioners' meeting, 2 p.m., Goldendale
- 28-29**—GPAA Gold and Treasure Show, Expo Center, Portland
- 31**—Jordan World Circus, TRAC Center, Pasco



Be Power Friendly When Planting Trees

Trees beautify homes and property, but care should be taken when planting trees near power lines.

Each year, power outages are caused by storms that bring down trees or limbs on lines.

You can help minimize outages by taking a

power-friendly approach to landscaping. Avoid planting trees under power lines.

If you are planting within 30 feet of a power line, plant trees that will grow no higher than 25 feet. Larger trees should be planted more than 30 feet from lines. ■

Plan Ahead For New Electrical Services

Are you planning a new project that will require electrical services? Following is an update on Klickitat PUD construction schedule.

New electrical service requests are currently running two to three weeks out, once you are placed on the construction schedule.

To make a request:

- ▶ Contact the engineering department to schedule an appointment to discuss installation options.
- ▶ Buy an electrical permit from Washington State Labor and Industries.
- ▶ Provide a state electrical inspector's approval of your electrical service

installation.

- ▶ Pay for line extension costs, as determined by KPUD.
- ▶ Provide signed and notarized easement(s), if required.

Within a week of completing all of the requirements above, you should be placed on the construction schedule. Service installation will proceed within approximately three weeks.

KPUD encourages you to plan ahead and coordinate your electrical installation projects with us as soon as possible.

For more information, call (800) 548-8357.