

KLICKITAT PUD



Doug Tuning joins KPUD after working at solar and wind facilities around the region.

Welcome, Doug!

Doug Tuning has joined the team at Klickitat PUD's Renewable Natural Gas facility in Roosevelt as the site superintendent.

"I am fortunate to work with a highly talented team processing landfill gas into a renewable resource," he says. "Our facility provides a valuable service to the greater network of Klickitat PUD and the residents of Klickitat County."

Prior to joining KPUD, Doug's career took him on a journey of service within our local communities. He worked as a funeral director helping families in Goldendale and The Dalles.

"As with anything in life, change is a constant," he says.

He became interested in renewable energy and moved into the field, managing wind and solar assets.

"Living in rural communities, being close to family and helping

others has always been a driving force in my life," he says. "When the position for the superintendent opened, I knew I wanted to join the team and work within the community in which I was raised. It is truly a blessing to be back within the community and be in close proximity to my family and friends."

Alex Casimiro, RNG support assistant, calls Doug a "charismatic leader who has brought new energy to the team at RNG."

Outside of work, Doug is often outdoors, where he enjoys rock hounding, backpacking, sport shooting, hunting and fishing. ■

If you have an interest in the RNG facility, or would like a tour of the facility and to meet our team, please contact at the main office by calling 509-773-5891.

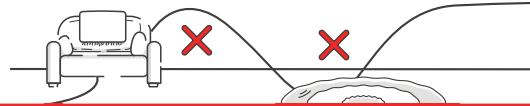


TWELVE HOLIDAY SAFETY TIPS

1 Keep decorations at least three feet away from heat sources – especially those with an open flame, like fireplaces and candles.



2 The best decorations are safe decorations, so when you're decorating, make sure not to run cords under rugs or furniture.



3 If you have a natural Christmas tree water it to keep it fresh and safe.



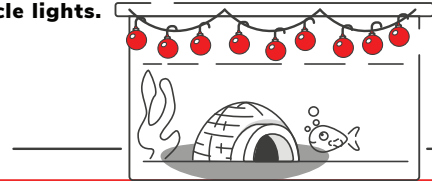
4 Always turn off your decorations when you leave your home and when you're sleeping.



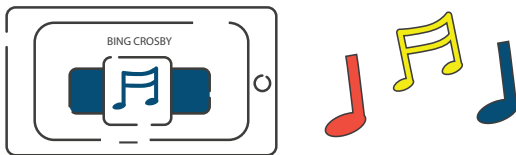
5 If you're using extension cords or adapters that add receptacles, consider having a qualified electrician add more outlets to your home.



6 Only use electronics in dry areas. As tempting as it is, you just can't decorate your aquarium with icicle lights.



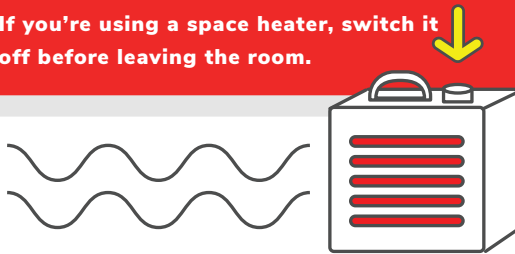
7 Remember that phones and tablets should stay on your nightstand.



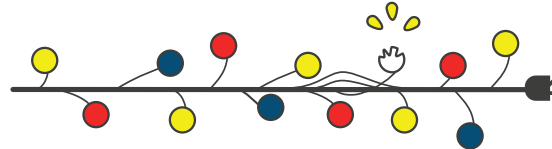
8 Every home needs a working smoke alarm in each bedroom, outside sleeping areas and on every level, including the basement.



9 If you're using a space heater, switch it off before leaving the room.



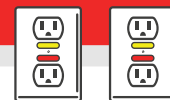
10 Inspect your decorations and discard any that are damaged or worn out.



11 Keep batteries stored safely in their packaging and out of reach from small children and pets.



12 The best gift for your family is an Arc-Fault Circuit Interrupter breakers or outlets. Many electrical fires that occur every year could be prevented by AFCIs.



Please share this free resource to save lives



www.facebook.com/ESFI.org



www.twitter.com/ESFI dot org



www.youtube.com/ESFI dot org